

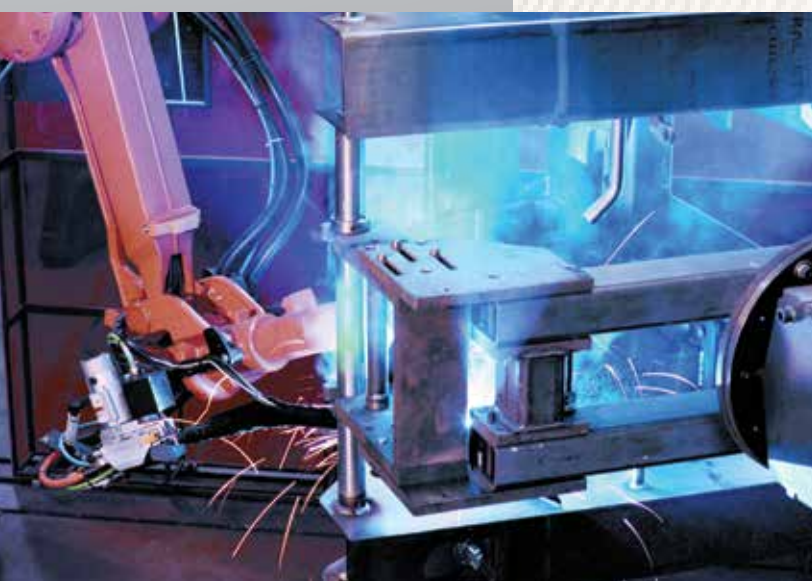


SKID STEER LOADERS

RADIAL & VERTICAL LIFT



2012 ▲ 2026 ▲ 1350R ▲ 1500R ▲ 1650R ▲ 1900R ▲ 2200R ▲ 2600R
2700V NXT2 ▲ 3300V NXT2 ▲ 4000V



WHAT BEGAN IN THE 19TH CENTURY AS AN AGRICULTURAL IMPLEMENT MANUFACTURER HAS GROWN INTO A 21ST CENTURY EQUIPMENT POWERHOUSE - MUSTANG COMPACT EQUIPMENT.

Known in the early years as the Owatonna Manufacturing Company, Mustang was among the first to make what is known today as the skid steer loader. Since that time, Mustang has combined old-school experience with innovative processes to offer one of the broadest lines of compact equipment available today.

MUSTANG. THE ORIGINAL WORKHORSE.

SKID STEERS: LEADING THE HERD

Building its first skid steer loader in 1965, Mustang was a true pioneer in the equipment world. Almost fifty years later, Mustang continues the tradition with one of the most complete lines of skid steer loaders on the market today.

With eleven models ranging from 386 kg to an industry-leading 1814 kg of operating capacity, Mustang offers both radial- and vertical-lift models.



RADIAL LIFT



2012



2026



1350R



1500R



1650R



1900R



2200R



2600R

VERTICAL LIFT



2700V
NXT2



3300V
NXT2



4000V

MUSTANG

▲ RADIAL-LIFT and ▲ VERTICAL-LIFT

LOADING OR LIFTING - WE HAVE THE MACHINE FOR YOU

RADIAL LIFT

Offers enhanced performance in excavating, grading and digging below grade applications. Due to the radial lift path, the maximum reach is greater at the middle of the lift height.

SINGLE PIN DESIGN

Provides superior durability in loading and pushing applications.



DURABLE BUILD

Up to 114 mm width lift arm construction delivers superior strength and rigidity.

VERTICAL LIFT

Providing more reach at full lift height is optimal for applications that require loading and stacking at high heights. By keeping the load closer to the machine, lift capacities are increased over radial-lift models.

SINGLE PLANE LIFT ARM

Design features large diameter pins aligned in a single plane for best-in-class vertical and lateral strength and rigidity.



EXCELLENT FORWARD REACH

The Mustang radial lift skid steer loaders provide excellent forward reach at the middle of the lift path. This provides excellent performance for loading flatbed trucks, backfilling or dumping over a wall.



X-TYPE

Upper-rear channel support welded to the top and between the load arms provides added rigidity without obstructing rear visibility.

TRUE VERTICAL

The 4000V has a true vertical lift path. The 2700V NXT2 and 3300V NXT2 have a near vertical path.



▲ POWER and ▲ PERFORMANCE

COMPACT POWERHOUSES: MODELS 2012 & 2026



**386 kg RATED
OPERATING CAPACITY**

LOW OVERALL HEIGHT

Gain access to low clearance sites and buildings.

2012 1897 mm
2026 1786 mm

LOW-PROFILE LIFT ARM

A high-strength, low-profile design maximizes operator visibility for added performance and safety.



**LIFT HEIGHT
2746 mm**

SELF-LEVELING

Hydraulic self-leveling is available as an option.
models 2012 and 2026

LEVEL II FOPS

Robust operator station design provides added protection for the operator. *models 2012 and 2026*

LOW PROFILE DESIGN

Low profile design and narrow width make working in small spaces easy.



**LIFT HEIGHT
2438 mm**



**476 kg RATED
OPERATING CAPACITY**

The optional counterweight increases the operating capacity to 533 kg.



YANMAR STAGE 3A ENGINES

Yanmar Stage 3A 3-cylinder naturally-aspirated engine provides the power you need.

2012	24 hp [17.9 kW]	86 Nm
2026	37.3 hp [27.8 kW]	108 Nm



MUSTANG

MID-FRAME SKID STEER LOADERS

skid steer loaders - radial & vertical

▲ POWER and ▲ PERFORMANCE

ALL-NEW

MID-SIZED MUSCLE: MODELS 1350R, 1500R & 1650R

STAGE 3A YANMAR DIESEL ENGINES

1350R	46.9 hp [35 kW]	144 Nm
1500R	46.9 hp [35 kW]	144 Nm

STAGE 3B YANMAR DIESEL ENGINES

1650R	69.9 hp [52.1 kW]	241 Nm
-------	-------------------	--------



LEVEL II FOPS

Robust operator station design provides added protection for the operator.

CAB-FORWARD DESIGN

All-new cab design is mounted forward on the chassis and the seat is mounted higher for exceptional visibility to the front, rear, sides and cutting edge.

EASY ACCESS HYDRAULICS

Auxiliary hydraulics mounted on the top of the lift arm for easy access and fast attachment connect and disconnect.

HYDRAULIC FLOW

1350R	64.4 L/min
1500R	64.4 L/min
1650R	71.4 L/min

DURABLE CYLINDERS

Induction-hardened, chrome-plated rods are used for lift and tilt cylinders, providing added durability.

LOW-PROFILE LIFT ARM

New lift arm increases the width between cylinders for better entry and sight lines.

LIFT HEIGHT

1350R	2784 mm
1500R	3012 mm
1650R	3023 mm

SELECTABLE SELF-LEVELING

Hydraulic self-leveling with on-off control for the operator is available as an option.

DIGITAL COLOR DISPLAY

This information center shows real time fuel consumption, engine RPM, machine hours, engine diagnostic codes, warning indicators and much more.



RATED OPERATING CAPACITY

STANDARD	COUNTERWEIGHT
1350R 612 kg	680 kg
1500R 680 kg	748 kg
1650R 748 kg	816.5 kg



LARGE-FRAME SKID STEER LOADERS

skid steer loaders - radial & vertical

▲ POWER and ▲ PERFORMANCE

SUPERIOR SKID STEERS: MODELS 1900R, 2200R & 2600R

STAGE 3A* YANMAR DIESEL ENGINES

1900R	69.9 hp [52.1 kW]	244.2 Nm
2200R	72 hp [53.7 kW]	280 Nm
2600R	72 hp [53.7 kW]	280 Nm

LEVEL II FOPS

Robust operator station design provides added protection for the operator.

CAB-FORWARD DESIGN

All-new cab design is mounted forward on the chassis and the seat is mounted higher for class-leading visibility to the front, rear, sides and cutting edge.

RADIAL-PISTON DRIVE MOTORS

Maintenance-free, radial-piston drive motors provide high start-up torque and maximum ground speed up to 20 km/hr for quick acceleration.



LONG WHEELBASE

A long wheelbase provides a smoother ride and a lower center of gravity for added stability.

1900R	1067 mm
2200R	1092 mm
2600R	1257 mm

RATED OPERATING CAPACITY

STANDARD		COUNTERWEIGHT
1900R	862 kg	957 kg
2200R	998 kg	1075 kg
2600R	1179 kg	1261 kg



LOW-PROFILE LIFT ARM

A high-strength, low-profile design maximizes operator visibility to the front and side for added performance and safety.

LIFT HEIGHT

1900R	3061 mm
2200R	3124 mm
2600R	3124 mm

SELECTABLE SELF-LEVELING

Hydraulic self-leveling with on-off control for the operator is available as an option.



BETWEEN-THE-TIRE

design keeps machine length short and compact. Model 1900R



OVER-THE-TIRE

design provides wider access and improved visibility. Models 2200R and 2600R



MUSTANG



* Transition to Stage 3B engine scheduled for Q2/Q3 2015

VERTICAL LIFT SKID STEER LOADERS

skid steer loaders - radial & vertical

▲ POWER and ▲ PERFORMANCE

VERTICAL LIMIT: MODELS 2700V NXT2, 3300V NXT2, & 4000V

STAGE 3A* YANMAR DIESEL ENGINES

2700V NXT2	72 hp [53.7 kW]	294 Nm
3300V NXT2	72 hp [53.7 kW]	294 Nm

VERTICAL-LIFT BOOM

High-strength, low-profile design increases operator visibility and lifts the load in a nearly vertical path on the 2700V NXT2 and 3300V NXT2.

FUEL ECONOMY

Equipped with an electronic engine control and electronic hand and foot throttles*, these units can be operated at partial throttle for lower sound levels and reduced fuel consumption.

LEVEL II FOPS

Robust operator station design provides added protection for the operator.

CAB-FORWARD DESIGN

All-new cab design is mounted forward on the chassis and the seat is mounted higher for exceptional visibility to the front, rear, sides and cutting edge.

LONG WHEELBASE

A long wheelbase provides a smoother ride and a lower center of gravity for added stability.

2700V NXT2	1257 mm
3300V NXT2	1257 mm
4000V	1387 mm

RATED OPERATING CAPACITY

STANDARD		COUNTERWEIGHT
2700V NXT2	1225 kg	1361 kg
3300V NXT2	1497 kg	N/A
4000V	1814 kg	N/A



* Transition to Stage 3B engine scheduled for Q2/Q3 2015



SELECTABLE SELF-LEVELING
Hydraulic self-leveling with on-off control for the operator is available as an option. Models 2700V NXT2 & 3300V NXT2

"SOFT-SHIFT" DRIVE

Standard two-speed "soft-shift" drive provides smooth transitions between low/high speeds for increased operator comfort.
Models 2700V NXT2 & 3300V NXT2

LIFT HEIGHT

2700V NXT2	3310 mm
3300V NXT2	3332 mm
4000V	3647 mm

STANDARD SELF-LEVELING

Hydraulic self-leveling is standard equipment on the model 4000V.

VERTICAL-LIFT BOOM

High-strength, low-profile design increases operator visibility and lifts the load in a true vertical path on the model 4000V.

SMOOTH OPERATION

Hydraglide™ ride control system allows the lift arm to "float" when transporting loads, minimizing loss of material, and increased operator comfort.



WORLD'S MOST POWERFUL SKID STEER LOADER
99 hp [74 kW]



OPERATOR STATION

skid steer loaders - radial & vertical

▲ COMFORT and ▲ SAFETY

GET IN CONTROL



CHOOSE YOUR RIDE

A high-back, five-way adjustable seat comes as standard. Optional air-ride suspension seat or mechanical suspension seat provide enhanced comfort.

DIGITAL COLOR DISPLAY

This information center shows real time fuel consumption, engine RPM, machine hours, engine diagnostic codes, warning indicators and much more. Models 1350R, 1500R & 1650R



OPERATOR STATION COMFORT FEATURES



POWER PORT

Standard 12-volt accessory plug keeps you charged up all day.



CLIMATE CONTROL

Heat is standard on all cab models. Air conditioning is an option on select models.



RADIO OPTION

Factory installed, this radio option customizes your cab.



PRESSURIZED CAB

An optional pressurized, sealed cab enclosure provides a cleaner, quieter operating environment.

EASY ENTRY AND EXIT

Large entry area allows for easy access to the operator station.

VISIBILITY

Wide opening in the front of the machine and large screen windows provide high visibility for increased safety and precise placement.

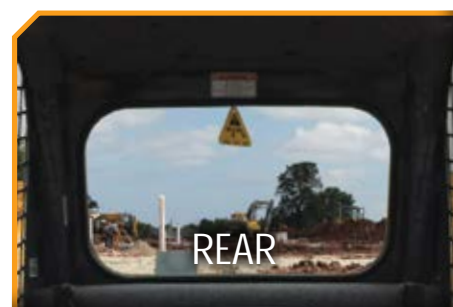
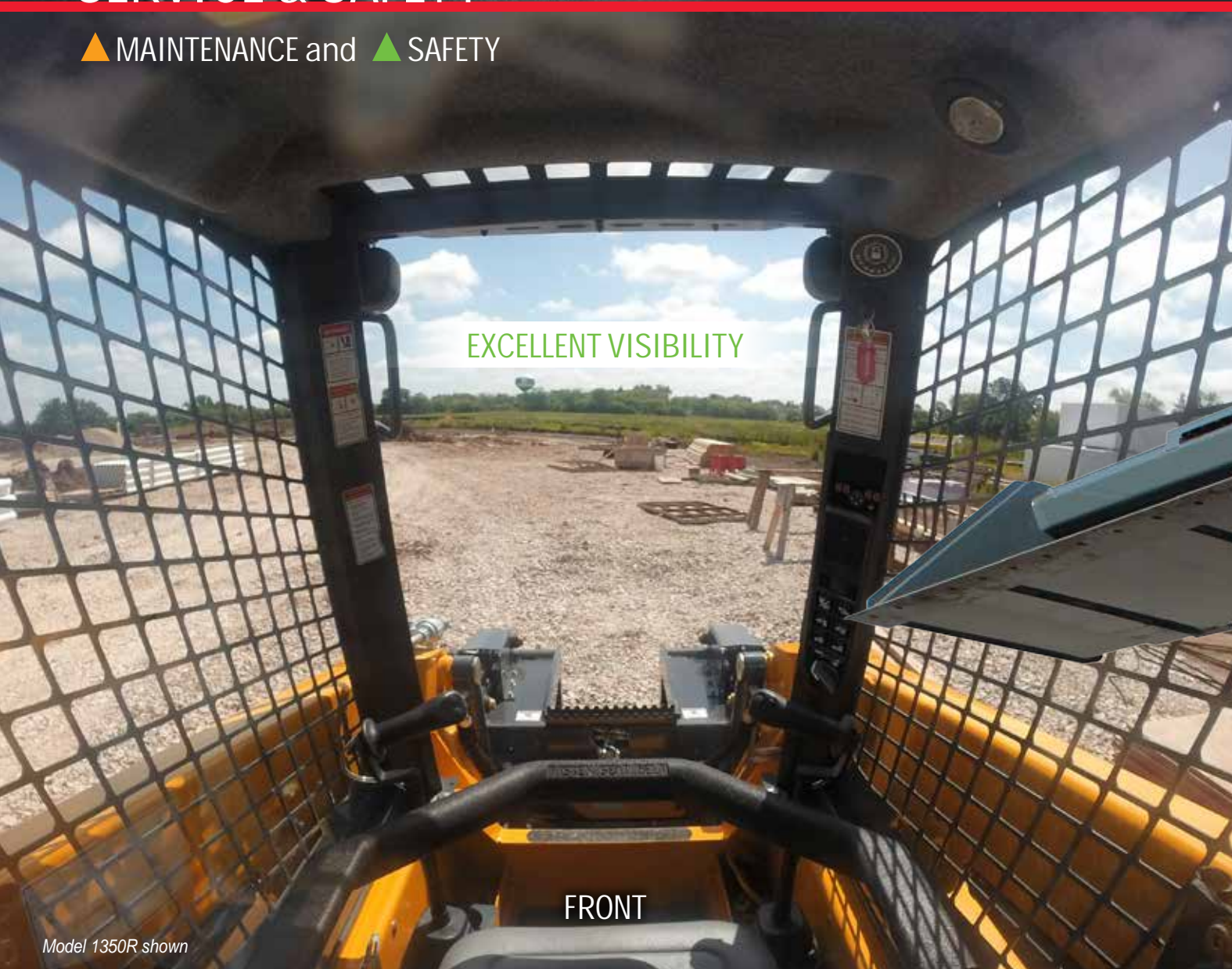
Refer to Page 24 for standard / optional features for each model

SERVICE & SAFETY

▲ MAINTENANCE and ▲ SAFETY

skid steer loaders - radial & vertical

LESS DOWN TIME PUTS MONEY IN YOUR POCKET



EXCELLENT VIEWS FROM ALL SIDES FOR SAFETY AND PRECISE OPERATION

Excellent visibility to the front, sides and rear of the machine allow for precise placement of loads and reduced jobsite incidents. A high-mounted seat provides an excellent vantage point to the attachment and cutting edge.



▲ PERFORMANCE and ▲ VERSATILITY

SELECTABLE SELF-LEVELING HYDRAULIC LIFT ACTION

keeps the bucket level throughout the raise/lift cycle. Available on select models.

ELECTRONIC ATTACHMENT CONTROL OPTION

This factory-installed add-on allows for control of all attachments.



PRECISION CONTROL

Standard proportional auxiliary hydraulic control gives the operator the ability to adjust attachment speeds with infinitely adjustable flow control. Available on select models.

Standard auxiliary detent (at full flow) allows the operator to set the hydraulic flow for continuous operation. Available on select models.

STANDARD AUXILIARY HYDRAULIC FLOW RATES

2012	38.2 L/min	1350R	64.4 L/min	1900R	70 L/min	2700V NXT2	89 L/min
2026	55 L/min	1500R	64.4 L/min	2200R	89 L/min	3300V NXT2	89 L/min
		1650R	71.4 L/min	2600R	89 L/min	4000V	121 L/min

GET ATTACHED

With a wide variety of attachments available, Mustang Skid Steer Loaders are easily transformed to meet your customers' needs.

PALLET FORKS



ROCK BUCKET



TRENCHER



RAKE



SNOW REMOVAL



AUGER



STUMP GRINDER



ROTOTILLER



MOWER



GRAPPLE BUCKET



GRADER BLADE



ANGLE BROOM



ALL-TACH®

All models feature the easy-to-use All-Tach® (universal-style) attachment mounting system compatible with most allied attachments.

SINGLE LEVER DESIGN for simplicity and strength.

HEAVY DUTY MOUNTING PLATE design for increased rigidity over tube style.



POWER-A-TACH®

Hydraulic Power-A-Tach® all-weather system option allows users to quickly install and remove attachments. An operator leaves the seat only to connect auxiliary hydraulics. This system is compatible with most allied attachments.



CUSTOMIZE YOUR RIDE

Mustang offers a variety of accessories and upgrades that can be easily added to new or used equipment. These can help enhance an existing unit or customize one for a particular job. Whether you are looking to add a counterweight, boost your hydraulics, or enclose a cab with heat and air conditioning, Mustang has the tools you need to craft your ideal ride.



TIRE OPTIONS



CAB ENCLOSURE



HYDRAGLIDE™



CONTROL OPTIONS



ROAD HOMOLOGATION



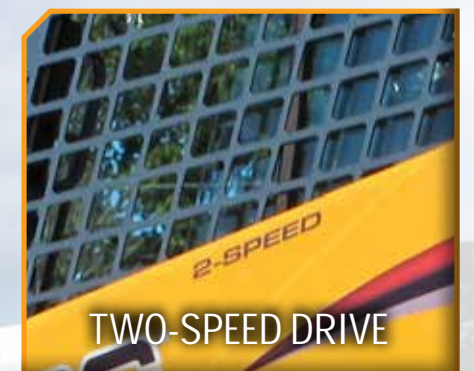
RADIO



AIR CONDITIONING



HIGH-FLOW HYDRAULICS



TWO-SPEED DRIVE



POWER-A-TACH®



COUNTERWEIGHT



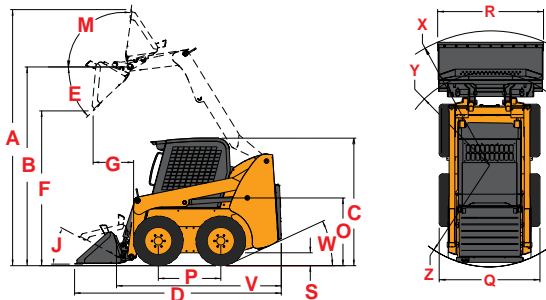
BACK-UP ALARM



		2012	2026	1350R	1500R	1650R	1900R	2200R	2600R	2700V NXT2	3300V NXT2	4000V
DIMENSIONS	A. Overall Operating Height – Fully Raised	3167 mm	3546 mm	3655 mm	3876 mm	3876 mm	4013 mm	4089 mm	4089 mm	4252 mm	4369 mm	4745 mm
	B. Height to Hinge Pin – Fully Raised	2438 mm	2746 mm	2784 mm	3023 mm	3023 mm	3061 mm	3124 mm	3124 mm	3310 mm	3332 mm	3647 mm
	C. Overall Height to Top of ROPS	1897 mm	1786 mm	1908 mm	1948 mm	1948 mm	2032 mm	2057 mm	2057 mm	2057 mm	2083 mm	2083 mm
	D. Overall Length with Bucket	2576 mm w/ 914 mm Bucket	2896 mm w/ 1397 mm Bucket	3056 mm w/ 1372 mm Bucket	3101 mm w/ 1562 mm Bucket	3101 mm w/ 1562 mm Bucket	3226 mm w/ 1676 mm Bucket	3467 mm w/ 1778 mm Bucket	3632 mm w/ 1778 mm Bucket	3759 mm w/ 1778 mm Bucket	3874 mm w/ 1880 mm Bucket	4026 mm w/ 2134 mm Bucket
	E. Dump Angle at Full Height	46°	42°	40°	38°	38°	42°	40°	40°	42°	42°	31°
	F. Dump Height	1836 mm	2146 mm	2098 mm	2380 mm	2380 mm	2311 mm	2388 mm	2388 mm	2540 mm	2502 mm	2916 mm
	G. Dump Reach at Full Height	376 mm	579 mm	577 mm	579 mm	579 mm	572 mm	686 mm	686 mm	813 mm	813 mm	1003 mm
	J. Rollback at Ground	23°	29°	29°	28°	28°	26°	28°	28°	29°	29°	31°
	M. Rollback Angle at Full Height	100°	99°	82°	99°	99°	96°	95°	95°	94°	94°	100°
	O. Seat to Ground Height	879 mm	828 mm	846 mm	904 mm	904 mm	991 mm	1016 mm	1016 mm	1016 mm	1041 mm	1046 mm
	P. Wheelbase	775 mm	876 mm	955 mm	988 mm	988 mm	1067 mm	1092 mm	1257 mm	1257 mm	1257 mm	1387 mm
	Q. Overall Width - Less Bucket ^A	909 mm	1229 mm	1336 mm	1605 mm	1605 mm	1638 mm	1664 mm	1664 mm	1765 mm	1829 mm	2019 mm
	R. Bucket Width	914 mm	1404 mm	1372 mm	1562 mm	1562 mm	1676 mm	1778 mm	1778 mm	1778 mm	1880 mm	2134 mm
	S. Ground Clearance to Chassis	150 mm	152 mm	201 mm	160 mm	160 mm	165 mm	203 mm	203 mm	203 mm	229 mm	185 mm
	V. Overall Length - Less Bucket	1905 mm	2258 mm	2342 mm	2385 mm	2385 mm	2388 mm	2667 mm	2832 mm	2959 mm	3023 mm	3086 mm
	W. Departure Angle	30°	26°	25°	21°	21°	25°	25°	25°	25°	25°	19°
	X. Clearance Circle – Front w/ Bucket	1473 mm	1763 mm	1842 mm	1869 mm	1869 mm	2007 mm	2223 mm	2286 mm	2286 mm	2400 mm	2248 mm
	Y. Clearance Circle – Front w/o Bucket	833 mm	1120 mm	1120 mm	1153 mm	1153 mm	1130 mm	1321 mm	1422 mm	1422 mm	1422 mm	1290 mm
	Z. Clearance Circle – Rear	1097 mm	1374 mm	1372 mm	1466 mm	1466 mm	1486 mm	1524 mm	1626 mm	1689 mm	1765 mm	1791 mm
	Standard Specification Tire Size	5.70 x 12	27x8.5x15 HD	10.00x16.5 HD	10.00x16.5 HD	10.00x16.5 HD	10.00x16.5 HD	12.00x16.5 HD	12.00x16.5 HD	12.00x16.5 HD	14.00x17.5 HD	14.00x17.5 HD
ENGINE	Make	Yanmar	Yanmar	Yanmar	Yanmar	Yanmar	Yanmar	Yanmar	Yanmar	Yanmar	Yanmar	Cummins
	Model	3TNV82 Stage 3A	3TNV88 Stage 3A	4TNV88-BKMSR2 Stage 3A	4TNV88-BKMSR2 Stage 3A	4TNV98C-NMS2 Stage 3B	4TNV98 Stage 3A*	4TNV98T Stage 3A*	4TNV98T Stage 3A*	4TNV98T Stage 3A*	4TNV98T Stage 3A*	QSB 4.5 Stage 3A*
	Gross Power (kW) @ rpm	N/A	37.3 hp (27.8) @ 3000	46.9 hp (35) @ 2800	46.9 hp (35) @ 2800	69.9 hp (52.1) @ 2500	69.9 hp (52.1) @ 2500	72 hp (53.7) @ 2500	72 hp (53.7) @ 2500	72 hp (53.7) @ 2500	72 hp (53.7) @ 2500	99 hp (74) @ 2200
	Net Power (kW) @ rpm	24 hp (17.9) @ 2400	35 hp (26) @ 2800	45.9 hp (34.2) @ 2800	45.9 hp (34.2) @ 2800	68.4 hp (51.2) @ 2500	68.4 hp (51) @ 2500	70.7 hp (52.7) @ 2500	70.7 hp (52.7) @ 2500	70.7 hp (52.7) @ 2500	70.7 hp (52.7) @ 2500	N/A
	Maximum Torque @ rpm	86 Nm @ 1200	108 Nm @ 1680	144 Nm @ 1680	144 Nm @ 1680	241 Nm @1625	244.2 Nm @ 1650	280 Nm @ 1600	280 Nm @ 1600	294 Nm @ 1650	294 Nm @ 1650	442 Nm @ 1300
	Displacement	1.3 L	1.6 L	2.19 L	2.19 L	3.3 L	3.3 L	3.3 L	3.3 L	3.3 L	3.3 L	4.5 L
HYDRAULIC SYSTEM	Auxiliary Hydraulics – Standard	38.2 L/min	55 L/min	64.4 L/min	64.4 L/min	71.4 L/min	70 L/min	90 L/min	90 L/min	89 L/min	89 L/min	121 L/min
	High-Flow Auxiliary Hydraulics – Option	N/A	N/A	N/A	N/A	N/A	119 L/min	132.5 L/min	132.5 L/min	132 L/min	132 L/min	154 L/min
	Reservoir Capacity	27.3 L	30.3 L	37.9 L	41.6 L	41.6 L	30.3 L	30.3 L	30.3 L	40 L	40 L	63 L
ELECTRICAL SYSTEM	Battery	650 CCA	675 CCA	950 CCA	950 CCA	950 CCA	950 CCA	950 CCA	950 CCA	950 CCA	950 CCA	950 CCA
	Starter	1.7 kW	2.3 kW	3.0 kW	3.0 kW	3.0 kW	3.0 kW	3.0 kW	3.0 kW	3.0 kW	3.0 kW	3.0 kW
	Alternator	40-amp	40-amp	100-amp	100-amp	100-amp	95-amp	95-amp	95-amp	95-amp	95-amp	130-amp
CAPACITIES / WEIGHTS	Rated Operating Capacity ^B	386 kg	476 kg	612 kg	680 kg	748 kg	862 kg	998 kg	1179 kg	1225 kg	1497 kg	1814 kg
	Rated Op. Capacity with Opt. Counterweight ^B	N/A	533 kg	680 kg	748 kg	816.5 kg	957 kg	1075 kg	1261 kg	1361 kg	N/A	N/A
	Fuel Tank	29 L	39.4 L	62.5 L	62.5 L	62.5 L	62.5 L	68.1 L	81.4 L	92.7 L	92.7 L	118 L
	Travel Speed – Maximum	8.9 km/hr	9.5 km/hr	12.9 km/hr	11.9 km/hr	12.6 km/hr	12.1 km/hr	12.9 km/hr	12.9 km/hr	12 km/hr	13 km/hr	10.5 km/hr
	Travel Speed w/ Two-Speed Option - Maximum	N/A	N/A	N/A	N/A	19.5 km/hr	20.1 km/hr	19.2 km/hr	19.2 km/hr	19.2 km/hr	19.6 km/hr	18 km/hr
	Operating Weight ^C – Approximate	1352 kg	1814 kg	2304 kg	2671 kg	2777 kg	3121 kg	3620 kg	3719 kg	3697 kg	4123 kg	5035 kg
SOUND / VIBRATION	Noise Level / Environmental Level (EU Dir. 00/14/EC)	101 dB(A)	101 dB(A)	101 dB(A)	101 dB(A)	101 dB(A)	101 dB(A)	101 dB(A)	101 dB(A)	101 dB(A)	101 dB(A)	102 dB(A)
	Operator Ear (EU Dir. 2006/42/EC)	80 dB(A)	85 dB(A)	85 dB(A)	85 dB(A)	85 dB(A)	85 dB(A)	85 dB(A)	85 dB(A)	85 dB(A)	85 dB(A)	85 dB(A)
	Whole-Body Vibration (ISO 2631-1)	≤ 0.81 m/s² (± 0.41k)	≤ 0.79 m/s² (± 0.40k)	≤ 0.81 m/s² (± 0.40k)	≤ 0.73 m/s² (± 0.40k)	≤ 0.97 m/s² (± 0.50k)	≤ 0.79 m/s² (± 0.39k)	≤ 0.79 m/s² (± 0.39k)	≤ 0.79 m/s² (± 0.39k)	≤ 0.79 m/s² (± 0.39k)	≤ 0.79 m/s² (± 0.39k)	≤ 0.89 m/s² (± 0.45k)
	Hand-Arm Vibration (ISO 5349-1)	≤ 0.93 m/s² (± 0.47k)	≤ 1.93 m/s² (± 0.97k)	≤ 1.90 m/s² (± 1.00k)	≤ 1.60 m/s² (± 0.80k)	≤ 1.53 m/s² (± 0.80k)	≤ 1.20 m/s² (± 0.60k)	≤ 1.20 m/s² (± 0.60k)	≤ 1.20 m/s² (± 0.60k)	≤ 1.20 m/s² (± 0.60k)	≤ 1.20 m/s² (± 0.60k)	≤ 1.00 m/s² (± 0.50k)

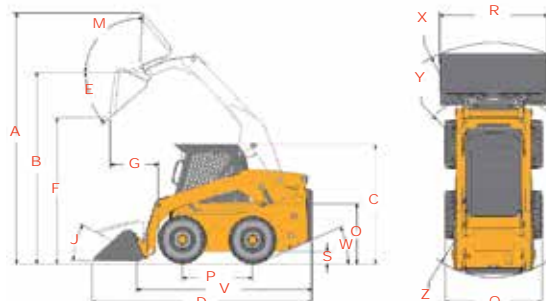
REFERENCE DIAGRAMS

RADIAL-LIFT

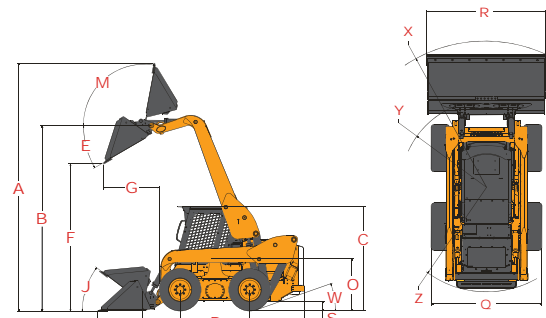


VERTICAL-LIFT

2700V NXT2 / 3300V NXT2



4000V



- A Overall width is dependent upon the amount of wheel offset.
B Per SAE J818, SAE J732, and ISO 14397
C Weight of base unit with standard equipment, standard tires (heavy-duty flotation), standard dirt-construction bucket and 79 kg operator.

* Transition to Stage 3B engine scheduled for Q2/Q3 2015



FEATURES

skid steer loaders - radial & vertical

ORIGINAL WORKHORSE

Mustang authorized dealers offer a full line of compact equipment, backed up by exceptional sales, service and parts experience.

For more information on Mustang equipment, visit mustangmfg.com

Mustang reminds users to read and understand the operator's manual before operating any equipment. Also, make sure all safety devices and shields are in place and functioning properly.

Mustang reserves the right to add improvements or make changes in specifications at any time without notice or obligation.



Mustang Mfg

¹ Adjustable control towers and armrests available on joystick and hand/foot control configurations only.

² Foot throttle on hand control units only.

³ Hydraglide™ Ride Control is standard with pilot controls and hands only controls.

⁴ Regional regulations apply.



MILE

Rue des Andains, 2, B-1360 Perwez
Tel: +33 240092162

○ STANDARD ● OPTIONAL

	2012	2026	1350R	1500R	1650R	1900R	2200R	2600R	2700V NXT2	3300V NXT2	4000V
CONTROLS											
Hands-Only	○	○	●	●	●						
Dual-Hand Controls						●	●	●	●	●	●
Hand/Foot Controls		○	●	●	●	●	●	●	●	●	●
Joystick Controls					●	●	●	●	●	●	●
ENGINE											
Engine Auto-Shutdown System		●	○	○	○	○	○	○	○	○	○
Engine Block Heater	●	●	●	●	●	●	●	●	●	●	●
Turbo-Charged Engine							○	○	○	○	○
Swing-out Cooler			○	○	○						○
HYDRAULICS											
Auxiliary Hydraulics	○	○	○	○	○	○	○	○	○	○	○
High-Flow Auxiliary Hydraulics						●	●	●	●	●	●
OPERATOR STATION											
Adjustable Arm Rests / Control Towers ¹						○	○	○	○	○	○
Heating	●	●	●	●	●	●	●	●	●	●	●
Air Conditioning						●	●	●	●	●	●
High-Back Adjustable Seat	○	○	○	○	○	○	○	○	○	○	
Suspension Seat - Mechanical	●	●	●	●	●	●	●	●	●	●	○
Suspension Seat - Air Ride			●	●	●	●	●	●	●	●	●
Cab Enclosure	●	●	●	●	●	●	●	●	●	●	●
Foot and Hand Throttles ²	○	○	○	○	○	○	○	○	○	○	○
Full Instrumentation		○	○	○	○	○	○	○	○	○	○
Horn	●	●	○	○	○	○	○	○	○	○	○
Integral Access Plate (removable)	○	○	○	○	○	○	○	○	○	○	○
Operator Restraint Bar	○	○	○	○	○	○	○	○	○	○	○
ROPS/FOPS Level II Overhead Guard	○	○	○	○	○	○	○	○	○	○	○
Sound Reduction Material		●	○	○	○	○	○	○	○	○	○
Work Lights - Front and Rear	○	○	○	○	○	○	○	○	○	○	○
Road Homologation ⁴	●	●	●	●	●	●	●	●	●	●	●
PERFORMANCE											
All-Tach® Attachment Mounting System	○	○	○	○	○	○	○	○	○	○	○
Power-A-Tach® Attachment Mounting System			●	●	●	●	●	●	●	●	●
Anti-Vandalism Protection	○	○	○	○	○	○	○	○	○	○	○
Back-Up Alarm	●	●	●	●	●	●	●	●	●	●	●
Brake Control (Auto / Manual)	○	○	○	○	○	○	○	○	○	○	○
Counterweight			●	●	●	●	●	●	●	○	
Hydraglide™ Ride Control ³				●	●	●	●	●	○	○	○
Hydraloc™ Safety System	○	○	○	○	○	○	○	○	○	○	○
Hydrostatic Drive	○	○	○	○	○	○	○	○	○	○	○
Lift Arm Support Device	○	○	○	○	○	○	○	○	○	○	○
Switchable Self-Leveling Hydraulic Lift Action	●	●	●	●	●	●	●	●	●	●	○
Two-Speed Drive					●	●	●	●	●	○	○